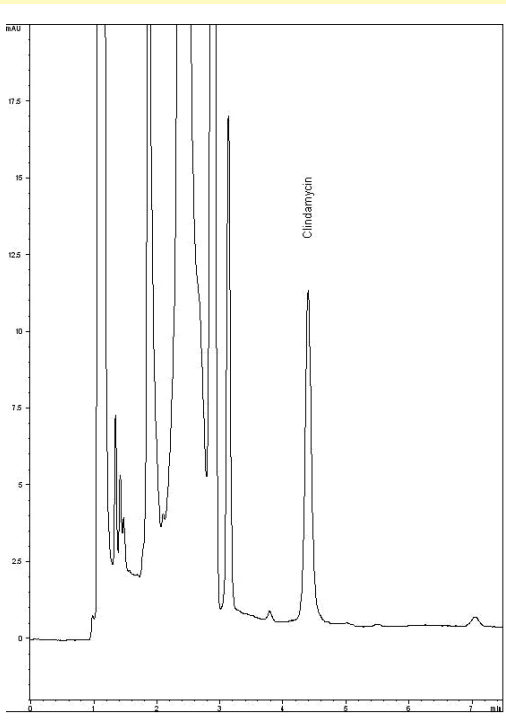
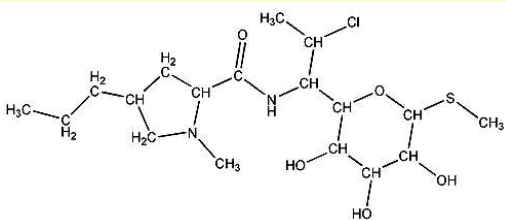


Easy Separation from Excipients

Clindamycin: Antibiotic



Method Conditions

Column:	Cogent Bidentate C8™, 4µm, 100Å
Catalog No.:	40008-15P
Dimensions:	4.6 x 150 mm
Mobile phase:	40% Acetonitrile, 60% 10mM Phosphate Buffer, pH 7.5
Flow rate:	1.0 mL/min
Peaks:	Clindamycin
Injection Volume:	20 µL
Detection:	UV 338 nm
Temperature:	25°C

Discussion

This semi-synthetic antibiotic is structurally related to lincomycin and the chromatogram shown of clindamycin is from a complex pharmaceutical formulation. Note the excellent peak shape and the selectivity from the excipients. The stability and robustness of the Cogent TYPE-C™ columns makes this an excellent choice for QC applications.

MW of the clindamycin is 424.99 with a pKa of 7.6 and is soluble in water, pyridine, ethanol and DMF.

For more information visit www.MTC-USA.com

Note: Normally used to treat infections with anaerobic bacteria, this drug is indicated for use against protozoal diseases such as malaria. Also used for acne can be useful against some MRSA infections. Clindamycin is marketed under various trade names including Dalacin, Cleocin, Evoclin and Duac as well in generic form.

Cat. No.	Description
40008-15P	Cogent Bidentate C8™ HPLC Column, 4mm, 100A, 4.6mm x 150mm