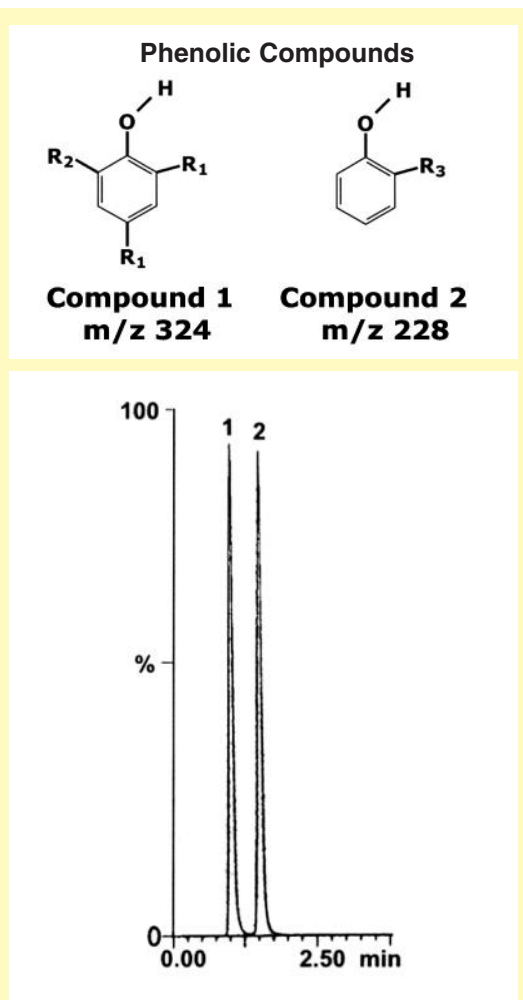


Separation by Functional Groups on a C18: Substituted Phenols



Note: Because silanols on the silica surface are substituted with Si-H, water is not retained by the stationary phase, so drying of all the solvents is not essential and analyses are very reproducible.

Method Conditions

Column: Cogent Bidentate C18, 4mm, 100A.
Catalog No.: 40018-75P
Dimensions: 4.6 x 75 mm
Mobile phase: 95:5 Hexane/Ethyl Acetate
Flow rate: 1.0 mL/minute
Injection Volume: 1 µL
Samples: 1 mg/mL of proprietary compound 1 (m/z 324) and 2 (m/z 228) dissolved in the mobile phase
Detection: Mass Spec: Atmospheric Pressure Chemical Ionization in positive mode: APCI+ Single Ion Monitoring

Discussion

Two proprietary compounds, which are precursors for a catalyst are analyzed using a C18 column under normal phase conditions. Due to the column's properties of the C18, the silica and the lack of silanol groups, separation of the two compounds is extremely reproducible (in a Normal Phase %RSD 0.1) and is very easy. With this column, there is no need to be concerned with the amount of moisture in your mobile phase.

Aqueous Normal Phase and Reverse Phase are also possible with this column.

For more information visit www.MTC-USA.com

Cat. No.	Description
40018-75P	Cogent Bidentate C18 HPLC Column, 100Å, 4mm, 4.6 x 75 mm, Standard End Fittings.

