

NEW EDITION

# THE Finder

SUMMER 2022

WHERE TO FIND PRODUCTIVITY TOOLS FOR YOUR LABORATORY!

## RSA<sup>TM</sup> Family of Vials, Caps and Inserts

Autosampler vials with reduced surface activity makes these premium, quality products the first choice for labs that require accurate and precise chromatographic results.

- » Meets or exceeds all instrument specs
- » Use for LCMS, LCMS/MS, low abundance & basic analytes
- » RSA-Pro X surface treatment – great for proteins and sticky compounds
- » Strict batch to batch QC
- » Don't be fooled by imitators



What is RSA<sup>TM</sup> Glass?

Quick Terms to Search on our Website:  
[RSA Family](#)

Great for  
Low Dosage  
Pharmaceuticals



## Diamond Hydride Columns Polar + Non-Polar Analytes

Diamond Hydride<sup>TM</sup> columns are excellent for LCMS and analyzing polar compounds. It's low carbon surface offers improved selectivity and better results than HILIC for analytes such as amino acids, organic acids and amines. These columns are extremely stable with unique separation capabilities.

- » Use pH Gradients for separation of closely related compounds
- » Minimal post time & fast re-equilibration
- » Uses lower salt buffers – protect your LCMS
- » Separate polar + non-polar peptides in a single run

Quick Terms to Search on our Website:  
[Diamond Hydride](#)



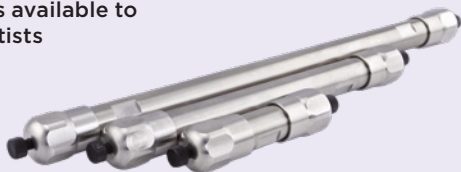
[www.mtc-usa.com](http://www.mtc-usa.com)

## COGENT<sup>™</sup> ABX<sup>™</sup>

### Stable HPLC Columns from pH 1-12

C18 columns for use with high pH mobile phase, extreme acids or bases in reversed phase.

- » Free R&D and technical support for lifetime of the column
- » Available in guard, analytical and preparative sizes
- » DEMO columns available to qualified scientists



Quick Terms to Search on our Website:  
[C18 ABX](#)

## PROTECT YOUR COLUMN



### Cogent Column Filters

Economical

- » Rated up to 4,500 psi
- » Easily replaceable
- » Free samples available

Catalog No. 49650-005

Quick Terms to Search on our Website:  
[Cogent Column Filters](#)

COGENT<sup>™</sup>

## Polypropylene Syringe Filters

### Advanced Quality Polypropylene Membrane

A great filter for aqueous or organic HPLC solvents, acids, and bases. The filters have been designed to be extractable free even in the first 2mL of filtration.

- » Available in a .22um or .45um Pore Size
- » Polypropylene housing
- » Very Hydrophilic
- » Virtually no extractables



Quick Terms to Search on our Website:  
[PP Hydrophilic](#)

## Mobile Phase Delivery System Cap



Ensure your Mobile Phase is not contaminated and comply with HPLC GLP requirements. Keeping these Polyethylene Screw Caps on the Bottles with the Tubing through-holes prevents dust and dirt from getting in and minimizes outgassing or absorption of atmospheric gases.

- » Medical grade PTFE insert
- » GL45 Threads
- » Autoclavable
- » Economical + Reusable



Quick Terms to Search on our Website:  
[58820-06](#)

## Mobile Phase Bottles for HPLC – Safety Coated

MicroSolv mobile phase borosilicate glass bottles coated in plastic are a must have for every Laboratory that considers safety their top priority. The outside of each borosilicate glass bottles is coated in an epoxy plastic that will contain broken glass and solvent when dropped, even when full.

- » Full range of sizes available – 1L to 10L
- » Compatible with most HPLC Mobile Phase Delivery Systems
- » Economical + Safe

Quick Terms to Search on our Website:  
[Safety Bottles](#)



## Performance Qualification DIY Kits

### For HPLC & UV-vis Instruments

Save time and money. Perform your own in-house qualification and calibration.

- » Avoid customer complaints, adverse events, and product recalls
- » In-house validation
- » Multiple tests per kit



Quick Terms to Search on our Website:  
[Self-Qualify](#)

## Single Injection HPLC Caps

### Ultra-Pure

Made with LCMS compatible, ultra-pure plastic, compares to Pico Pure™ brand caps. Design allows for venting during injection. Internal sealing cone prevents evaporation.

- » Great for PFAS testing
- » Thinned penetration point
- » No septa



Quick Terms to Search on our Website:  
[9502S-09-PE](#)

## 5mL Max Recovery Vials

Compared to the high recovery vial used in the Agilent InfinityLab™ LC Series, these AQ™ Brand Max Recovery vials are fully compatible and made with first hydrolytic, Class A, TYPE-33 Borosilicate clear glass. They have 16mm threads and with outer dimensions of 22x37mm.

- » QC controlled bottom depths
- » Low residual volume due to center-draining bottom
- » Low cost



Quick Terms to Search on our Website:  
[9516S-OCV](#)

## Headspace Vials & Caps

Take the worry out of choosing the proper Headspace consumables. Complete range of vials and caps.

- » QC controlled
- » Various cap and vial types available
- » Amber and clear glass
- » Screw top vials and caps available



Quick Terms to Search on our Website:  
[Headspace Vials](#)  
[Headspace Caps](#)

## LCMS Vials - Plastic

Specially formulated plastic where nothing is added to the process, is used to produce a unique, plastic vial that is compatible with LCMS. Extractable free with most LCMS solvents.

- » Great for PFAS testing
- » 300ul and 700ul volumes
- » Compares to "LCMS Certified" brands
- » Available in screw or snap top



Quick Terms to Search on our Website:  
[Screw Top LCMS](#)  
[Snap Top LCMS](#)

## 4mm Syringe Filters

Use 4mm Syringe Filters for sample sizes less than 1mL and when minimal residual volumes are needed. Available in many different membrane types.

- » Color coded for convenience
- » Polypropylene housing
- » Free samples available



Quick Terms to Search on our Website:  
[4mm Filters](#)



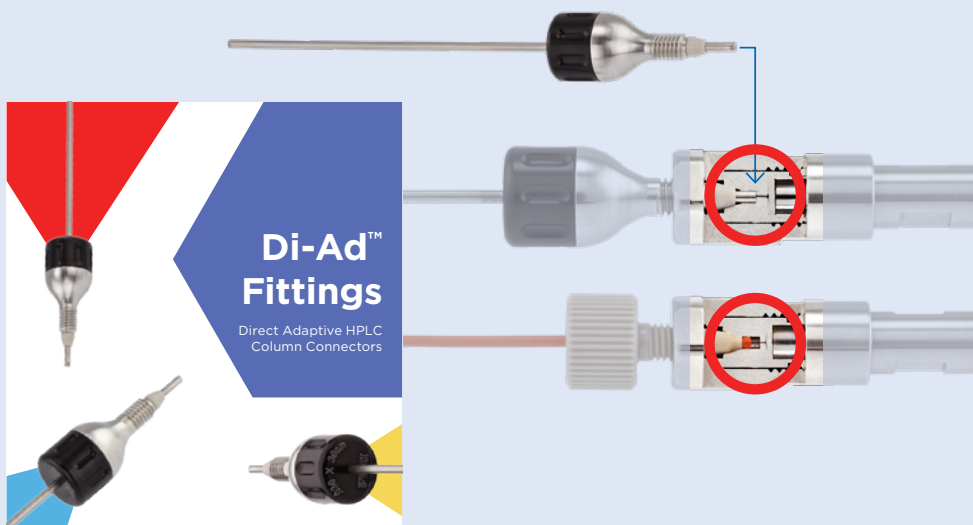
# Economical Column Connectors

Direct Adaptive Fittings for All Columns

Spring loaded HPLC column fitting with stainless steel laser cut precision tubing. A quick and easy connection with all brands of columns to help in reducing peak broadening due to poor connections.

- » Pressure rating: 10,000 psi
- » Various lengths and id's of stainless steel tubing available
- » Universal, self-adapting pilot length
- » Save time in method development

Quick Terms to Search on our Website:  
[Di-Ad](#)



## HPLC Tubing Straightener

The Beta Tool-2™ is a must have tool for every laboratory that works with stainless steel tubing.

- » Short, rounded nose for far reach into HPLC
- » Quickly remove kinks or bends
- » Works with 1/16<sup>th</sup> and 1/8<sup>th</sup> tubing

Quick Terms to Search on our Website:  
[Beta Tool 2](#)



## Pre-Cut Tubing - Better Connections - Easy

Pre-Cut PEEK tubing is the perfect solution to a difficult task in the chromatography laboratory; cutting tubing. Manufactured from Super-T™ premium grade tubing, these pre-cuts are available in various lengths for your convenience.

- » High pressure PEEK
- » Convenient time saver
- » Better cut

Quick Terms to Search on our Website:  
[Pre-Cut PEEK Tubing](#)

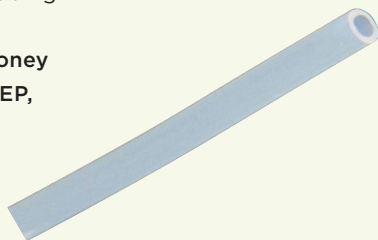


## Low Pressure Plastic Tubing

Low pressure tubing can be used on all HPLC systems; before the injector, after the detector, on the mobile phase inlet, and as to-waste tubing.

- » One stop shopping
- » Economical - save money
- » Choose from ETFE, FEP, PFA or PTFE

Quick Terms to Search on our Website:  
[Low Pressure Tubing](#)



## Clean Cut90™ Tubing Cutter

Cut PEEK or poly HPLC tubing with smooth, uniform, 90° edges with the Clean Cut90™ tool.

- » Cuts 5 different tubing OD's
- » Cut PEEK or other polymeric tubing
- » Replacement blade available
- » Low cost + easy to use

Quick Terms to Search on our Website:  
[Clean Cut90](#)



ONLY FROM

**MICROSOLV**  
TECHNOLOGY CORPORATION

Greater Wilmington, NC  
phone: 1.732.380.8900  
fax: 1.910.769.9435