

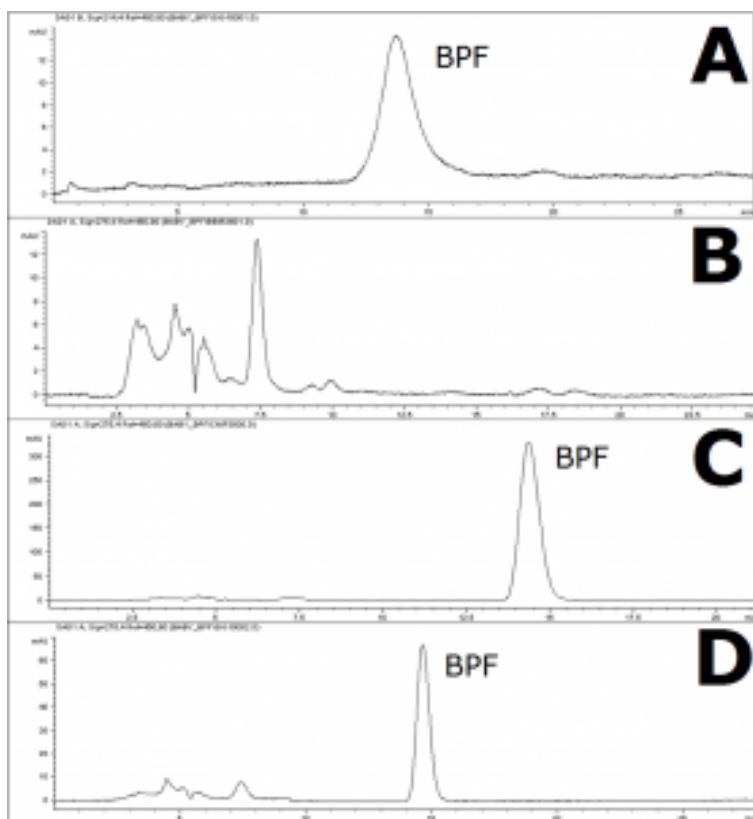
Bisphenol A, F and S in Baby Bottles Analyzed with LCMS - Extended AppNote

BPA, BPF, and BPS in Water Transferred from Baby Bottles

Ever since Bisphenol A (BPA) has become banned in baby bottle products in the U.S. due to its reported Endocrine-disrupting effects, manufacturers have had to use alternative materials. Two such materials with properties similar to BPA are Bisphenol S (BPS) and Bisphenol F (BPF). The problem is that these compounds may in fact be just as dangerous as BPA itself.

There is the question of whether they can be leached from the container into a liquid that is then ingested by the consumer. The extraction of Bisphenol compounds is known to be increased under higher temperatures. To this end, we used LCMS and HPLC approaches to detect BPA, BPS, and BPF in Water Samples heated by two different Methods using two different brands of baby bottles.

See below to download the full study.



Attachment

No 343 Bisphenol A, F and S in Baby Bottles Analyzed with LCMS pdf 0.6 Mb [Download File](#)

Printed from the Chrom Resource Center

Copyright 2025, All Rights Apply

MicroSolv Technology Corporation

9158 Industrial Blvd. NE, Leland, NC 28451

Tel: (732) 380-8900

Fax: (910) 769-9435

Email: customers@mtc-usa.com

Website: www.mtc-usa.com