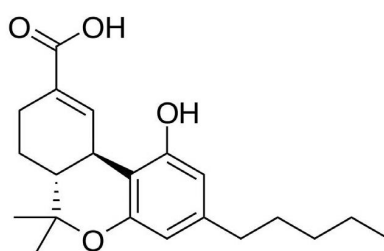
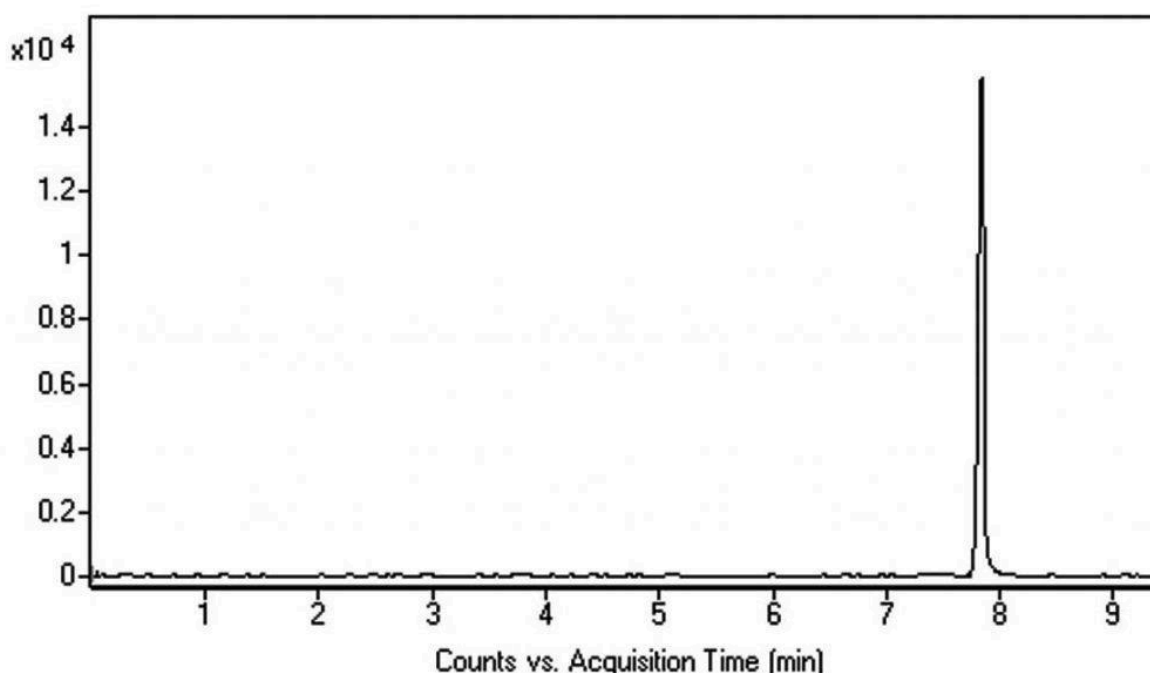


Cannabis Metabolite Analyzed with LCMS - AppNote

THC Metabolite Found in Urine Matrix Analyzed

Click [HERE](#) for Column Ordering Information.

The extraction procedure using an SPE technique allows for successful detection of this Cannabis metabolite with this Method. It is worth noting that the Retention of this Compound was achieved using Methanol rather than Acetonitrile as the Organic component in the Mobile Phase.



Peak:

(l)-9-Carboxy-11-Nor-Delta-9-Tetrahydrocannabinol, m/z 345.2060 [M+H]⁺

Method Conditions:

Column: Cogent Phenyl Hydride™, 4μm, 100Å

Catalog No.: [69020-05P-2](#)

Dimensions: 2.1 x 50mm

Mobile Phase:

A: DI H₂O / 0.1% Formic Acid (v/v)

B: Methanol / 0.1% Formic Acid (v/v)

Gradient:

| Time (minutes) | %B |
|----------------|----|
| 0 | 10 |
| 3 | 10 |
| 7 | 80 |
| 8 | 10 |

Post time: 3 minutes

Injection vol.: 1µL

Flow rate: 0.4ml / minute

Detection: ESI – POS - Agilent 6210 MSD TOF Mass Spectrometer

Sample Preparation: Urine sample was loaded into an SPE cartridge II (*Clean Screen Xcel™, UCT Bristol, PA, USA*) and eluted with 1mL of Acetonitrile, 2-Propanol, Formic Acid (50:50:1). After elution, the Sample was dried under Nitrogen gas and dissolved in 100uL of 50:50 Methanol / DI Water / 0.1% Formic Acid. The solution was filtered through a 0.45µm AQ™ Nylon Syringe Filter (MICROSOLV Tech Corp).

to: 0.9 minutes

Note: (1)-9-Carboxy-11-Nor-Delta-9- Tetrahydrocannabinol is the main metabolite of Tetrahydrocannabinol (THC), formed in the body after consumption of Cannabis. The compound stays in the body for a significant time, making it useful as a test compound for Cannabis use. In the U.S., Cannabis is a controlled substance at the Federal level, although many states have enacted laws legalizing it.



Attachment

No 268 Cannabis Metabolite Analyzed with LCMS pdf 0.2 Mb [Download File](#)

Printed from the Chrom Resource Center

Copyright 2025, All Rights Apply

MicroSolv Technology Corporation

9158 Industrial Blvd. NE, Leland, NC 28451

Tel: (732) 380-8900

Fax: (910) 769-9435

Email: customers@mtc-usa.com

Website: www.mtc-usa.com