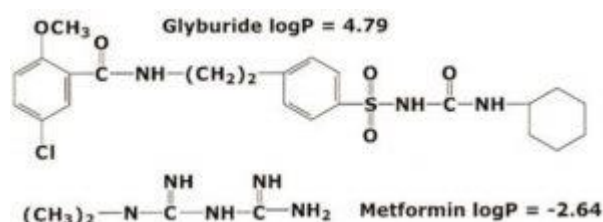
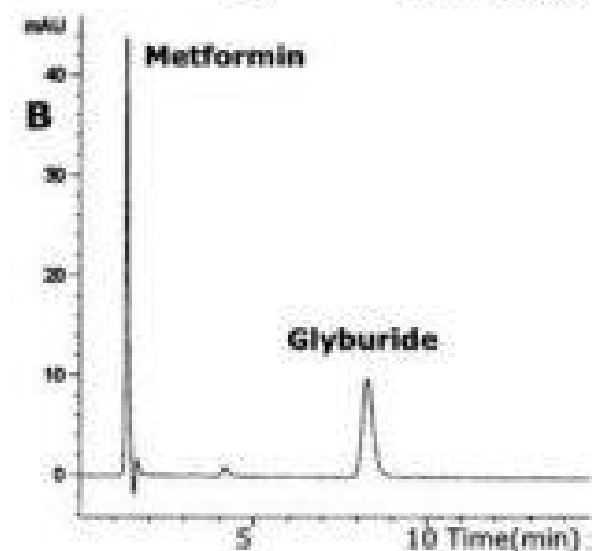
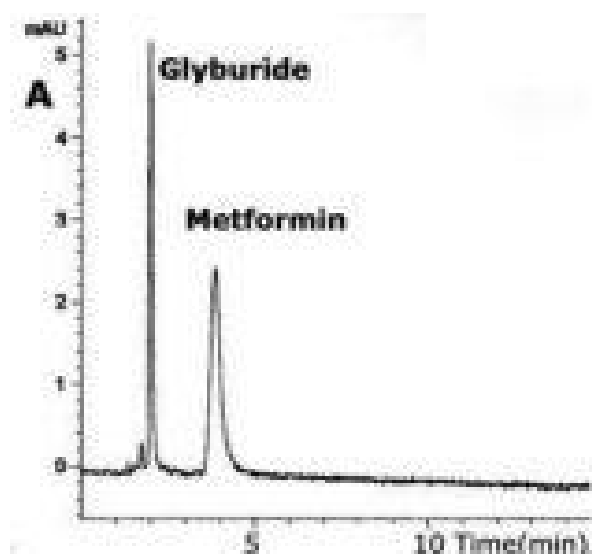


Glyburide and Metformin Analyzed with HPLC - AppNote

Separation of “Highly Polar” and “Non-Polar” Compounds in one Isocratic run

In this Method, the polar compound, Metformin, and the nonpolar compound Glyburide, can be retained on the same Stationary Phase (see A & B). Depending on the Mobile Phase composition either Metformin or Glyburide can be retained longer.



Method Conditions

Column: Cogent Bidentate C18™, 4μm, 100Å

Catalog No.: 40018-75P

Dimensions: 4.6 x 75mm

Mobile Phase:

A: 15% DI Water / 85% Acetonitrile / 0.5% Formic Acid

B: 50% DI Water / 50% Acetonitrile / 0.5% Formic Acid

Injection vol.: 1μL

Flow rate: 0.5mL / minute

Detection: UV @ 254nm

Sample Preparation: Stock Solution: 100μg / μL Glyburide and Metformin

Notes: Elution order was confirmed by LCMS, APCI+, with single ion monitoring Metformin (m/z 130) and Glyburide (m/z 369).



Attachment

No 08 Glyburide and Metformin Analyzed with HPLC pdf 0.2 Mb [Download File](#)

Printed from the Chrom Resource Center

Copyright 2025, All Rights Apply

MicroSolv Technology Corporation

9158 Industrial Blvd. NE, Leland, NC 28451

Tel: (732) 380-8900

Fax: (910) 769-9435

Email: customers@mtc-usa.com

Website: www.mtc-usa.com