

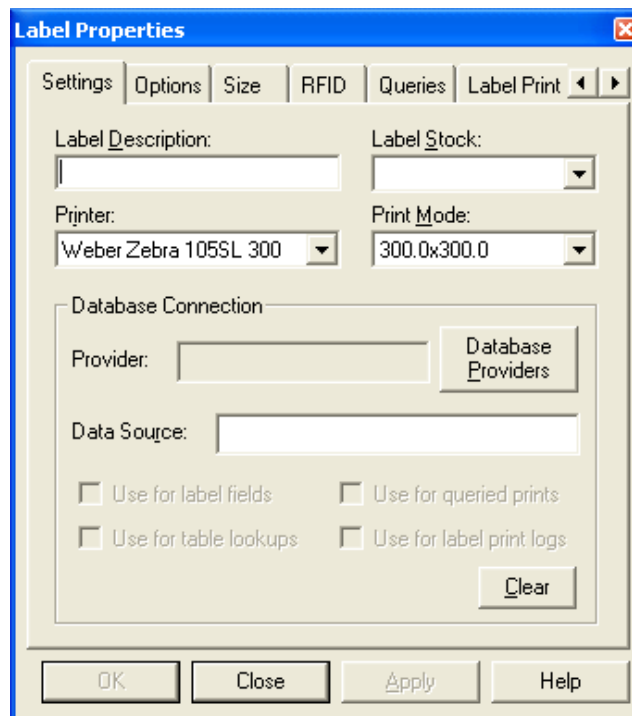
## Standard for printing on a SMALL MTC Label (Z-LABEL MTC-02) in Legitronic Software

### INTERNAL ONLY

**Department:** Packaging, QC, Marketing

This article contains the specs to use when creating and/or printing on Z-LABEL MTC-02 using **Legitronic Software**.

Below Are the Specs for the **Label Properties**. When you click on the label to be created or edited right click and choose **Label Properties**.



**Label Properties**

Settings | Options | Size | RFID | Queries | Label Print

Label Description:

Label Stock:

Printer:

Print Mode:

Database Connection

Provider:

Data Source:

☐ Use for label fields ☐ Use for queried prints

☐ Use for table lookups ☐ Use for label print logs

**Label Properties** [X]

Settings Options Size RFID Queries Label Print ◀ ▶

Color Settings

On-Screen Label Background: [ ] ...

On-Screen Field Foreground: [ ] ...

On-Screen Field Background: [ ] ...

Printed Field Foreground: [ ] ...

Printed Field Background: [ ] ...

Preview

☐ None

☒ First Label

☐ Every Label

☒ Display Graphic Fields

☒ Show Fields as Transparent

☒ Dynamic Database Updates

☐ Template [ ]

OK Close Apply Help

**Label Properties** [X]

Settings Options Size RFID Queries Label Print ◀ ▶

Design Width: [ 2.750 ]

Design Height: [ 2.750 ]

Margin: [ 0.000 ]

Print Rotation

☒ 0° ☐ 180°

☐ 90° ☐ 270°

Unit of Measure

☒ Inches ☐ Points

☐ Millimeters ☐ Dots

Multiple Across

Horizontal Count: [ 1 ]

Horizontal Print Interval: [ 4.125 ]

Continuous Label Stock

Vertical Print Interval: [ 4.000 ]

OK Close Apply Help

**Label Properties** [X]

Settings Options Size **RFID** Queries Label Print [Left] [Right]

Tag

Type: [None] Encoding: [ ]

Options	Value
Tag offset (0 = tag withi...	0.000
VOID print length	0.000
Write protect	No

Data Source

☐ Decimal ☐ Hexadecimal ☐ Text

Expression:

[ ]

OK Close Apply Help

**Label Properties** [X]

Settings Options Size RFID **Queries** Label Print [Left] [Right]

Provider: [ ] Database Providers Clear

Data Source: [ ] Start Value: [ ]

Table Name: [ ] End Value: [ ]

Search Field: [ ] ☐ Reevaluate Auto Counts ☐ Use SQL Expression

SQL Expression: [ ] Test [ ] Records found

OK Close Apply Help

The screenshot shows the 'Label Properties' dialog box with the 'Label Print Log' tab selected. The dialog has a title bar with a close button. Below the title bar are tabs for 'Options', 'Size', 'RFID', 'Queries', 'Label Print Log', and 'Sum'. The 'Label Print Log' tab contains a section with the following fields and controls:

- Label Print Log**: A section header.
- Provider:** A text input field with a 'Database Providers' button to its right.
- Data Source:** A text input field.
- Table Name:** A text input field with a dropdown arrow on the right.
- Clear**: A button located at the bottom right of the section.

At the bottom of the dialog are four buttons: 'OK', 'Close', 'Apply', and 'Help'.

In	1	2	3
	<b>Vials, Crimp Top 300ul</b>		
	Cat No. 9532C-0-WCV		
	Autosampler vials, crimp top, 300ul, 12x32mm, clear, serum finish, borosilicate glass with write on patch and fused insert. MicroSolv brand. 100/pack		
	Lot No.	xxxx-xxx-xx	
	-----		
		V.1.14	

**LINE 1 Settings:**

**Field Properties** [X]

Settings | Options | Font | Data | Serial

Field Name:

Data Result:

☒ Display Field      ☒ Print Field

Design Orientation:       Unit of Measure:

Position

Horizontal:       Vertical:

Size

Horizontal:       Vertical:

OK      Close      Apply      Help

**Field Properties** [X]

Settings | Options | Font | Data | Serial

Field Type:

Alignment

Horz:       Vert:

Paragraph

☒ Auto Wrap      Line Spacing: (%)

☐ Dynamic Fit

☐ Object Wrap

☐ Single Line

Variable

☐ Variable

Designator (01-99):

Max chars:

☒ Auto Calc

Color

Screen

Foreground:  ...

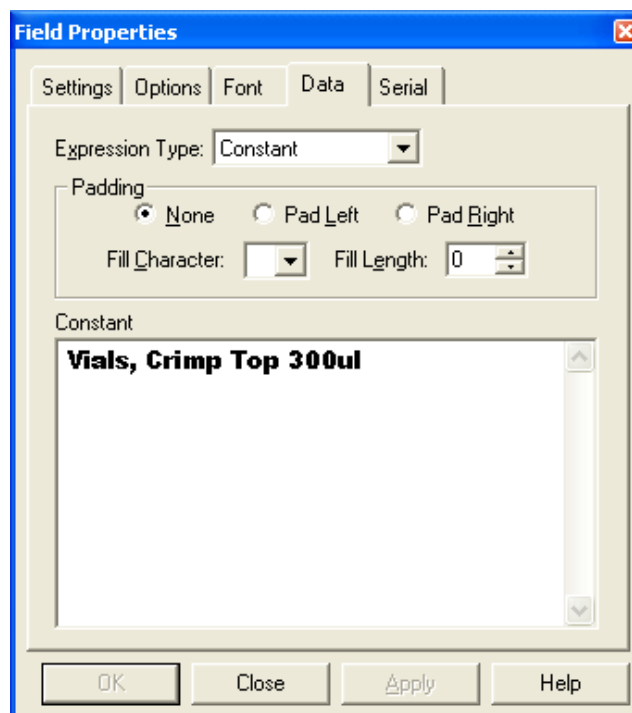
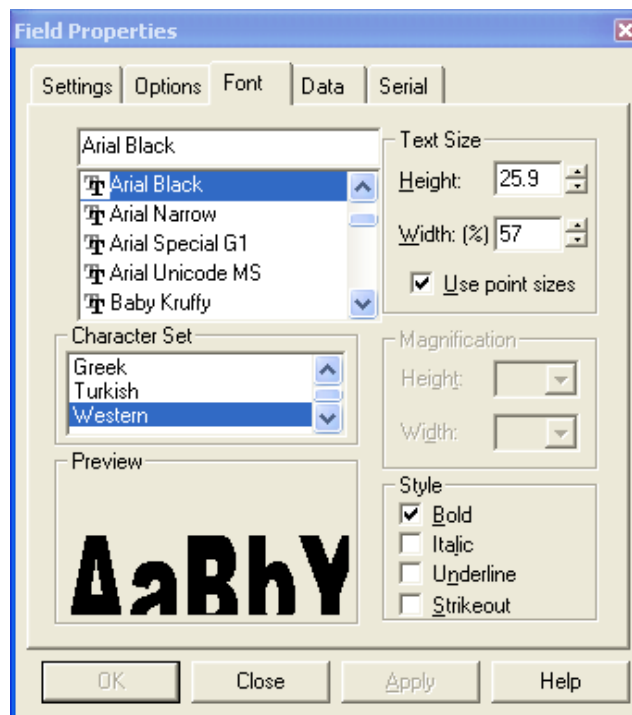
Background:  ...

Printed

Foreground:  ...

Background:  ...

OK      Close      Apply      Help



**Field Properties** [X]

Settings Options Font Data **Serial**

Serial Number

☒ No      Start Value: 0  
☐ Yes      Increment: 0  
☐ Tracking      Tracking Serial Number Name:

Leading Fill Character

Character:      Length: 0

Automatic Label Counts

☐ This field determines number of identical labels printed  
☐ This field determines number of labels serialized

OK Close Apply Help

## LINE 2 Settings

**Field Properties** [X]

Settings Options Font Data **Serial**

Field Name: Text5

Data Result:

☒ Display Field      ☒ Print Field  
 Design Orientation: Rotate 0°      Unit of Measure: Inches

Position

Horizontal: 0.959      Vertical: 0.795

Size

Horizontal: 1.385      Vertical: 0.289

OK Close Apply Help



**Field Properties** [X]

Settings Options Font Data Serial

Field Type: Text

Alignment

Horz: Left

Vert: Top

Paragraph

☒ Auto Wrap

☐ Dynamic Fit

☐ Object Wrap

☐ Single Line

Line Spacing: (%) 100

Variable

☐ Variable

Designator (01-99): 0

Max chars: 0

☒ Auto Calc

Color

Screen

Foreground: [Black] [...]

Background: [White] [...]

Printed

Foreground: [Black] [...]

Background: [White] [...]

OK Close Apply Help

**Field Properties** [X]

Settings Options Font Data Serial

Font

Arial

Arial

Arial Black

Arial Narrow

Arial Special G1

Arial Unicode MS

Text Size

Height: 12.5

Width: (%) 85

☒ Use point sizes

Character Set

Turkish

Vietnamese

Western

Magnification

Height: [100%]

Width: [100%]

Preview

AaBbYyZ

Style

☐ Bold

☐ Italic

☐ Underline

☐ Strikeout

OK Close Apply Help

**Field Properties** [X]

Settings Options Font Data Serial

Expression Type: Constant

Padding

☒ None ☐ Pad Left ☐ Pad Right

Fill Character: [v] Fill Length: 0

Constant

Cat No. 9532C-D-WCV

OK Close Apply Help

**Field Properties** [X]

Settings Options Font Data Serial

Serial Number

☒ No ☐ Yes ☐ Tracking

Start Value: 0

Increment: 0

Tracking Serial Number Name: [v]

Leading Fill Character

Character: [v] Length: 0

Automatic Label Counts

☐ This field determines number of identical labels printed

☐ This field determines number of labels serialized

OK Close Apply Help

**LINE 3 Settings:**

**Field Properties** [X]

Settings Options Font Data Serial

Field Name: Text2

Data Result:

☒ Display Field ☒ Print Field

Design Orientation: Rotate 0° Unit of Measure: Inches

Position

Horizontal: 0.656 Vertical: 1.245

Size

Horizontal: 1.928 Vertical: 0.702

OK Close Apply Help

**Field Properties** [X]

Settings Options Font Data Serial

Field Type: Text

Alignment

Horz: Left Vert: Top

Paragraph

☒ Auto Wrap ☐ Dynamic Fit ☐ Object Wrap ☐ Single Line

Line Spacing: (%) 80

Variable

☐ Variable

Designator (01-99): 0

Max chars: 0

☒ Auto Calc

Color

Screen

Foreground: [Black] [...]

Background: [White] [...]

Printed

Foreground: [Black] [...]

Background: [White] [...]

OK Close Apply Help

Field Properties

Settings Options Font Data Serial

Segoe UI

Text Size

Height: 11.8

Width: (%) 95

☒ Use point sizes

Character Set

Turkish

Vietnamese

Western

Preview

AaBbYyZz

Magnification

Height:

Width:

Style

☐ Bold

☐ Italic

☐ Underline

☐ Strikeout

OK Close Apply Help

Field Properties

Settings Options Font Data Serial

Expression Type: Constant

Padding

☒ None ☐ Pad Left ☐ Pad Right

Fill Character: Fill Length: 0

Constant

Autosampler vials, crimp top, 300ul,  
12x32mm, clear, serum finish, borosilicate  
glass with write on patch and fused insert.  
MicroSolv brand. 100/pack

OK Close Apply Help

**Field Properties**

Settings Options Font Data **Serial**

Serial Number

☒ No      Start Value: 0  
☐ Yes      Increment: 0  
☐ Tracking      Tracking Serial Number Name:

Leading Fill Character

Character:      Length: 0

Automatic Label Counts

☐ This field determines number of identical labels printed  
☐ This field determines number of labels serialized

OK Close Apply Help

## LINE 4 SETTINGS

**Field Properties**

Settings Options Font Data **Serial**

Field Name: Text

Data Result:

☒ Display Field      ☒ Print Field  
 Design Orientation: Rotate 0°      Unit of Measure: Inches

Position

Horizontal: 1.103      Vertical: 2.150

Size

Horizontal: 0.378      Vertical: 0.106

OK Close Apply Help

Field Properties

Settings Options Font Data Serial

Field Type: Text

Alignment

Horz: Left

Vert: Top

Paragraph

☒ Auto Wrap
☐ Dynamic Fit
☐ Object Wrap
☐ Single Line

Line Spacing: (%) 100

Variable

☐ Variable

Designator (01-99): 0

Max chars: 0

☒ Auto Calc

Color

Screen

Foreground:

Background:

Printed

Foreground:

Background:

OK Close Apply Help

Field Properties

Settings Options Font Data Serial

@Arial Unicode MS

@Arial Unicode MS

@Meiryo

@Meiryo UI

AaSansOutline

Aatrix

Text Size

Height: 9.6

Width: (%) 100

☒ Use point sizes

Character Set

Turkish

Vietnamese

Western

Magnification

Height:

Width:

Preview

AaBbYyZz

Style

☐ Bold
☐ Italic
☐ Underline
☐ Strikeout

OK Close Apply Help

**Field Properties** [X]

Settings Options Font Data Serial

Expression Type: Constant

Padding

☒ None ☐ Pad Left ☐ Pad Right

Fill Character: [ ] Fill Length: 0

Constant

Lot No.

OK Close Apply Help

**Field Properties** [X]

Settings Options Font Data Serial

Serial Number

☒ No ☐ Yes ☐ Tracking

Start Value: 0

Increment: 0

Tracking Serial Number Name: [ ]

Leading Fill Character

Character: [ ] Length: 0

Automatic Label Counts

☐ This field determines number of identical labels printed

☐ This field determines number of labels serialized

OK Close Apply Help

**LINE 5 Settings:**

**Field Properties** [X]

Settings | Options | Font | Data | Serial

Field Name:

Data Result:

☒ Display Field      ☒ Print Field

Design Orientation:       Unit of Measure:

Position

Horizontal:       Vertical:

Size

Horizontal:       Vertical:

OK   Close   Apply   Help

**Field Properties** [X]

Settings | Options | Font | Data | Serial

Field Type:

Alignment

Horz:       Vert:

Paragraph

☒ Auto Wrap      Line Spacing: (%)

☐ Dynamic Fit

☐ Object Wrap

☐ Single Line

Variable

☐ Variable

Designator (01-99):

Max chars:

☒ Auto Calc

Color

Screen

Foreground:  ...

Background:  ...

Printed

Foreground:  ...

Background:  ...

OK   Close   Apply   Help



**Field Properties**

Settings Options Font Data Serial

@Arial Unicode MS  
@Arial Unicode MS  
@Meiryo  
@Meiryo UI  
AaSansOutline  
Aatrix

Text Size  
Height: 9.6  
Width: (%) 100  
☒ Use point sizes

Character Set  
Turkish  
Vietnamese  
Western

Magnification  
Height:  
Width:

Style  
☐ Bold  
☐ Italic  
☐ Underline  
☐ Strikeout

Preview  
AaBbYyZz

OK Close Apply Help

**Field Properties**

Settings Options Font Data Serial

Expression Type: Supplied Input

Data Source  
☒ Keyboard ☐ Remote Input  
☐ DDE ☐ Table Lookup

Entry Time  
☒ First label ☐ Every label

Prompt  
Lot No.

Default Data  
xxxx-xxx-xx

DDE Data

Table Lookup...  
Paste Link...  
Display Links...

Next Page >>

OK Close Apply Help

**Field Properties**

Settings Options Font Data Serial

Serial Number

☒ No
 Start Value: 0

☐ Yes
 Increment: 0

☐ Tracking
 Tracking Serial Number Name:

Leading Fill Character

Character:
 Length: 0

Automatic Label Counts

☐ This field determines number of identical labels printed

☐ This field determines number of labels serialized

OK Close Apply Help

## LINE 6 Settings:

**Field Properties**

Settings Options Font Data Serial

Field Name: Text6

Data Result:

☒ Display Field
 ☒ Print Field

Design Orientation: Rotate 0°
 Unit of Measure: Inches

Position

Horizontal: 2.466
 Vertical: 2.388

Size

Horizontal: 0.263
 Vertical: 0.129

OK Close Apply Help

**Field Properties**

Settings Options Font Data Serial

Field Type: Text

**Alignment**

Horz: Left

Vert: Top

**Paragraph**

☒ Auto Wrap

☐ Dynamic Fit

☐ Object Wrap

☐ Single Line

Line Spacing: (%) 100

**Variable**

☐ Variable

Designator (01-99): 0

Max chars: 0

☒ Auto Calc

**Color**

**Screen**

Foreground: [Black] ...

Background: [White] ...

**Printed**

Foreground: [Black] ...

Background: [White] ...

OK Close Apply Help

**Field Properties**

Settings Options **Font** Data Serial

Font: Segoe UI

Text Size

Height: 10.1

Width: (%) 50

☒ Use point sizes

Character Set

Turkish

Vietnamese

**Western**

Preview

**AaBbYyZz**

Style

☒ **Bold**

☐ Italic

☐ Underline

☐ Strikeout

OK Close Apply Help

**Field Properties** [X]

Settings Options Font Data Serial

Expression Type: Constant

Padding

☒ None ☐ Pad Left ☐ Pad Right

Fill Character: [ ] Fill Length: 0

Constant

V.1.14

OK Close Apply Help

**Field Properties** [X]

Settings Options Font Data Serial

Serial Number

☒ No ☐ Yes ☐ Tracking

Start Value: 0

Increment: 0

Tracking Serial Number Name: [ ]

Leading Fill Character

Character: [ ] Length: 0

Automatic Label Counts

☐ This field determines number of identical labels printed

☐ This field determines number of labels serialized

OK Close Apply Help

**LINE 7 Settings:**

**Field Properties** [X]

Settings Options

Field Name: Line1

Data Result:

☒ Display Field ☒ Print Field

Design Orientation: Rotate 0° Unit of Measure: Inches

Position

Horizontal: 0.603 Vertical: 2.386

Size

Horizontal: 2.021 Vertical: 0.007

OK Close Apply Help

**Field Properties** [X]

Settings Options

Field Type: Line

Color

Screen Foreground: [Color Picker]

Printed Foreground: [Color Picker]

OK Close Apply Help