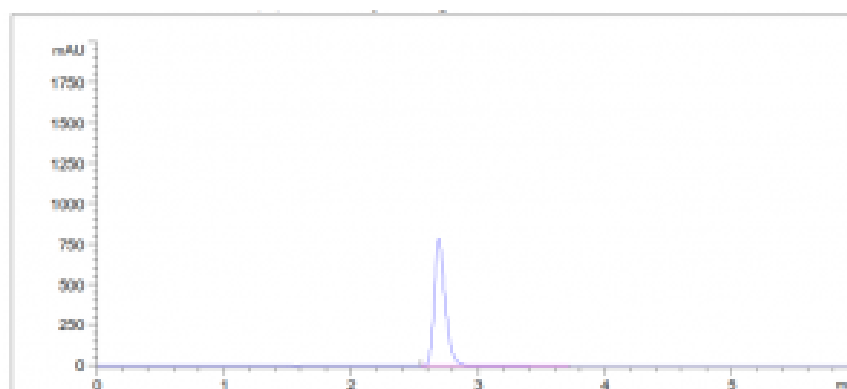


Gemcitabine Assay Analyzed with HPLC – AppNote

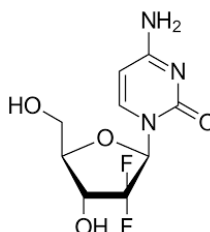
A Reliable Method for a Chemotherapeutic Drug

This Gemcitabine Assay is easily performed and demonstrates Run to Run consistency and Precision with Retention Time RSD values below 0.4%. This Method shows consistency and reliability for analysis of this Nucleoside Chemotherapeutic.



Peak:

Gemcitabine



Met hod Conditions:

Column: Cogent RP C8™, 5um, 150Å

Catalog No.: [68508-25P](#)

Dimensions: 4.6mm x 250mm

Mobile Phase: 13.8g of Monobasic Sodium Phosphate and 2.5ml of Phosphoric Acid in 1L of Water.

Injection vol.: 20µL

Flow rate: 1.2mL / minute

Detection: UV @ 275nm

Sample Preparation: Gemcitabine 1.0mg / mL in DI Water

Note: Gemcitabine is a nucleoside analog and a chemotherapeutic agent. It is used as adjunct therapy in the treatment of certain types of ovarian cancer, non-small cell lung carcinoma, metastatic breast cancer, and as a single agent for pancreatic cancer.

his Method was developed by and is presented courtesy of [ARL- Eutech Scientific Services, Inc.](#)



Printed from the Chrom Resource Center

Copyright 2025, All Rights Apply

MicroSolv Technology Corporation

9158 Industrial Blvd. NE, Leland, NC 28451

Tel: (732) 380-8900

Fax: (910) 769-9435

Email: customers@mtc-usa.com

Website: www.mtc-usa.com