

## Rescaling graphs in the Chemical Solutions HPLC Qualification Kit Excel template - Tips & Suggestions

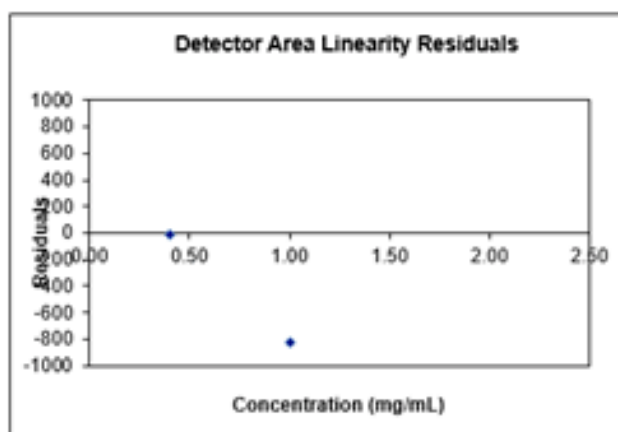
Date: 8-DECEMBER-2021 Last Updated: 2-JULY-2025

### Steps to manually re-scale the Y-axis in the PQ Kit template

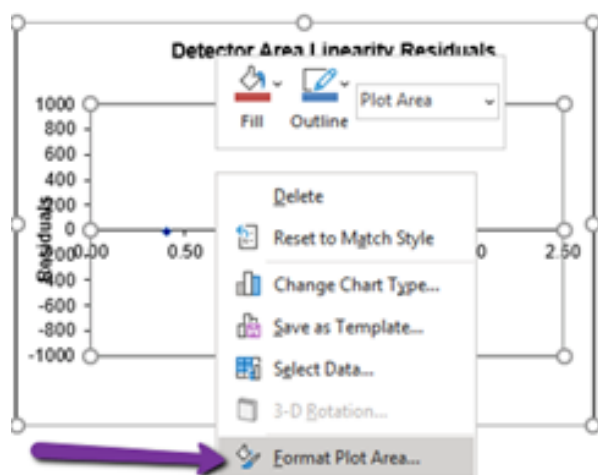
*Note, Residual graphs are not automatically set to scale of the data entered. As such, the Y-axis default settings may be out of ratio for the data values entered. By manually re-scaling the Y-axis, it will reflect your values for a more effective visual ratio.*

*Please use the following instructions to format and scale the Y-axis of graphs in the Chemical Solutions HPLC PQ Kit's Excel template:*

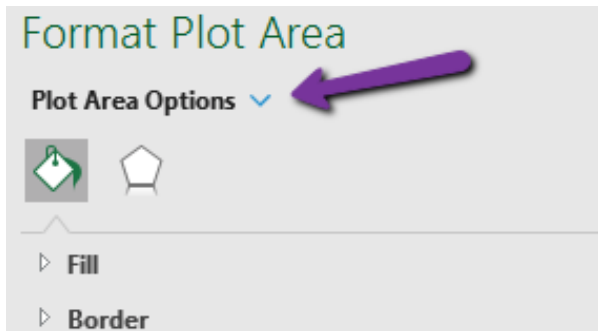
1. In the detector linearity tab of the PQ RID spreadsheet, right click on the detector linearity residual graph.



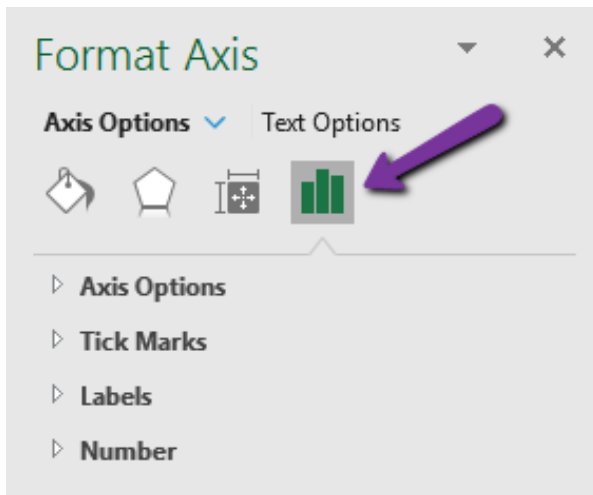
- 1.
2. This will open a tab of options. Click "**Format Plot Area.**"



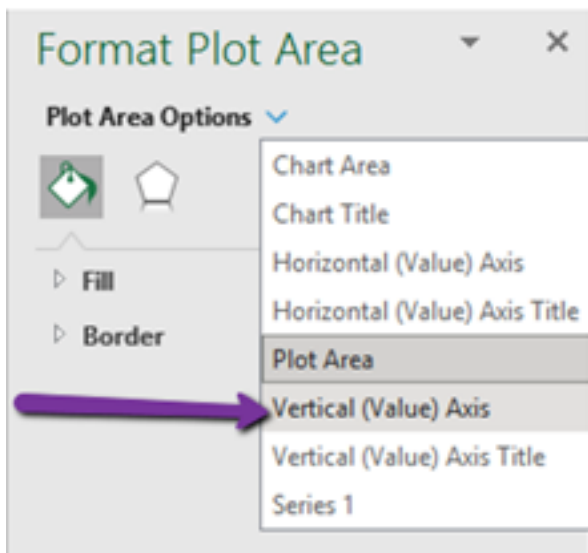
3. This opens a new grey tab to the right of the screen, labeled, "**Format Plot Area.**" Click the blue arrow next to the "**Plot Area Options.**"



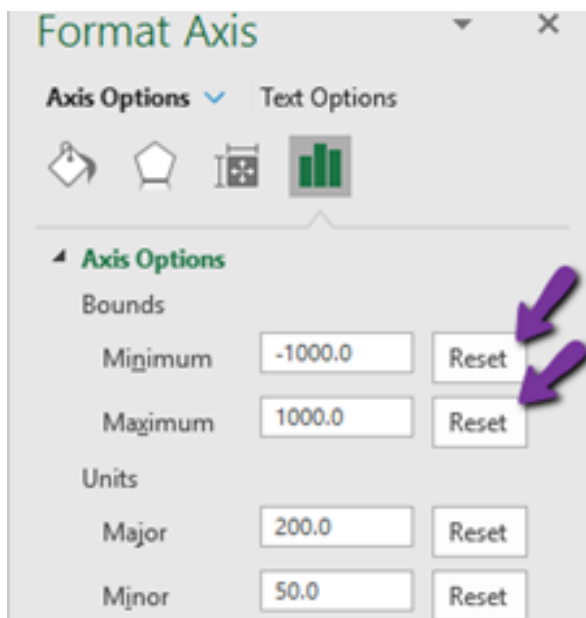
4. Next, click the 'Graph' icon.



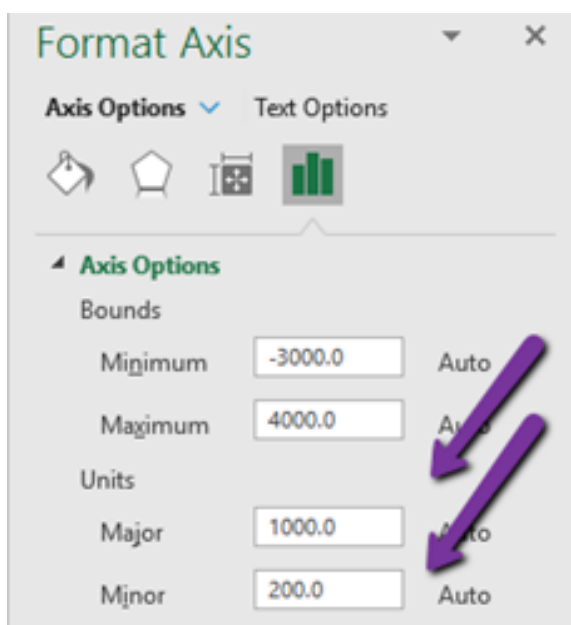
5. This will open a list under "**Plot Area Options.**" click the "**Vertical (Value) Axis**" option.



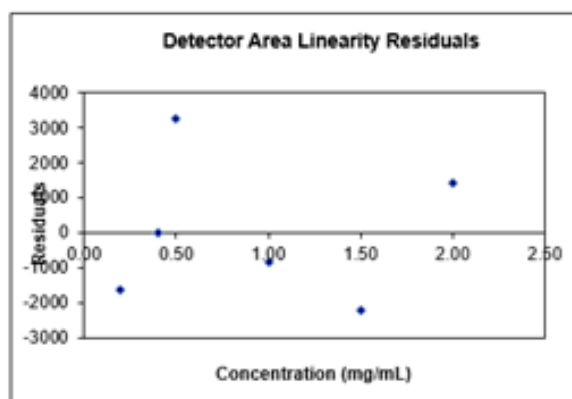
6. This will open a tab to "**Axis Options.**" Then Check "**Reset**" on both the *Minimum* and *Maximum Bounds*.



7. Then check “**Reset**” on both the *Major* and *Minor* **Units**.



8. Your new graph should now be to scale and display all data points.



Printed from the Chrom Resource Center  
Copyright 2025, All Rights Apply  
**MicroSolv Technology Corporation**  
9158 Industrial Blvd. NE, Leland, NC 28451

Tel: (732) 380-8900  
Fax: (910) 769-9435  
Email: [customers@mtc-usa.com](mailto:customers@mtc-usa.com)  
Website: [www.mtc-usa.com](http://www.mtc-usa.com)