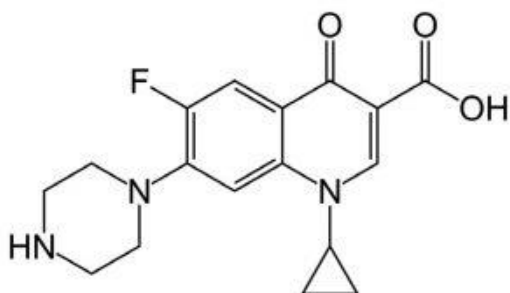
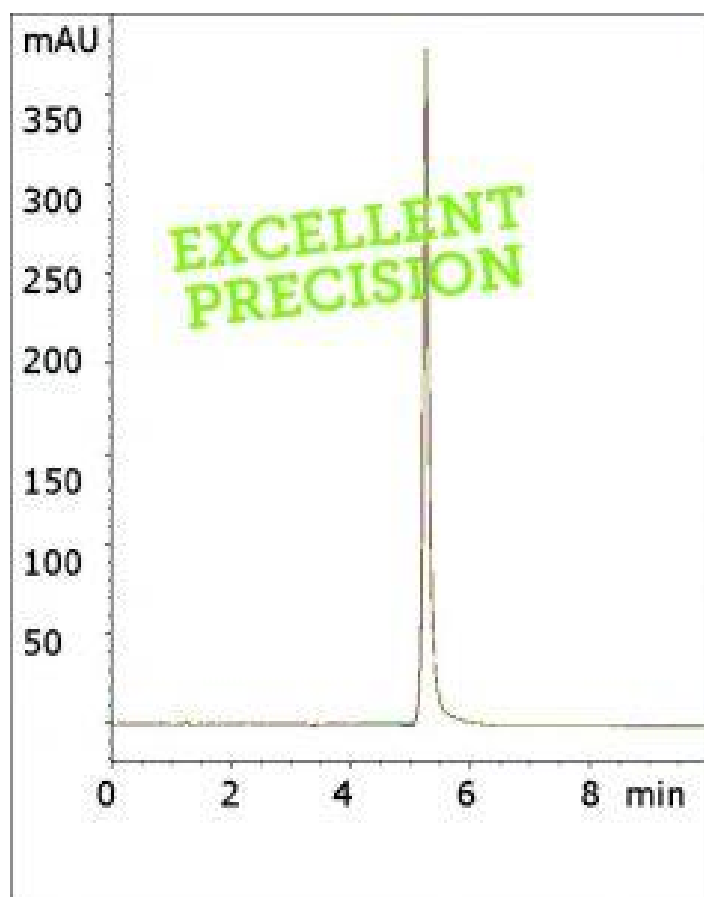


Ciprofloxacin LC-MS Compatible Assay - AppNote

Antibiotic Tablet

Ciprofloxacin has several amine groups and therefore is susceptible to peak tailing in Reversed Phase methods. The USP assay method for Ciprofloxacin tablets uses Triethylamine as an Ion Pair Agent to reduce tailing and in addition, Phosphoric Acid is included in the Mobile Phase.

These conditions make the USP method incompatible with MS detection and therefore limit its applications. In this method, only Formic Acid is required in order to obtain a peak that meets the system suitability specification for the API tailing factor.



Peak:
Ciprofloxacin

Method Conditions

Column: Cogent Diamond Hydride™, 4µm, 100Å

Catalog No.: 70000-7.5P

Dimensions: 4.6 x 75mm

Mobile Phase:

A: DI Water / 0.1% Formic Acid (v/v)

B: Acetonitrile / 0.1% Formic Acid (v/v)

Gradient:

Time (minutes)	%B
0	95
1	95
6	50
7	95

Post Time: 3 minutes

Flow rate: 1.0 mL / minute

Detection: UV @ 270 nm

Injection vol.: 1µL

Sample Preparation: A 250 mg strength Ciprofloxacin tablet was ground and dissolved in 25 mL of 50% solvent A / 50% (v/v) solvent B diluent. Solution was sonicated 10 minutes and filtered through a 0.45µm Nylon Syringe Filter (MICROSOLV Tech Corp.). Sample for injection was diluted 1:10 with the same diluent.

t₀: 0.9 minutes

Note: Ciprofloxacin is a Fluoroquinolone antibiotic which acts by inhibition of DNA Gyrase and Topoisomerase IV. It was once used as a drug of last resort for bacterial infections, but accumulated resistance has made the drug less effective in recent years.



Attachment

No 172 Ciprofloxacin LC-MS Compatible Assay pdf 0.5 Mb [Download File](#)

Printed from the Chrom Resource Center

Copyright 2025, All Rights Apply

MicroSolv Technology Corporation

9158 Industrial Blvd. NE, Leland, NC 28451

Tel: (732) 380-8900

Fax: (910) 769-9435

Email: customers@mtc-usa.com

Website: www.mtc-usa.com