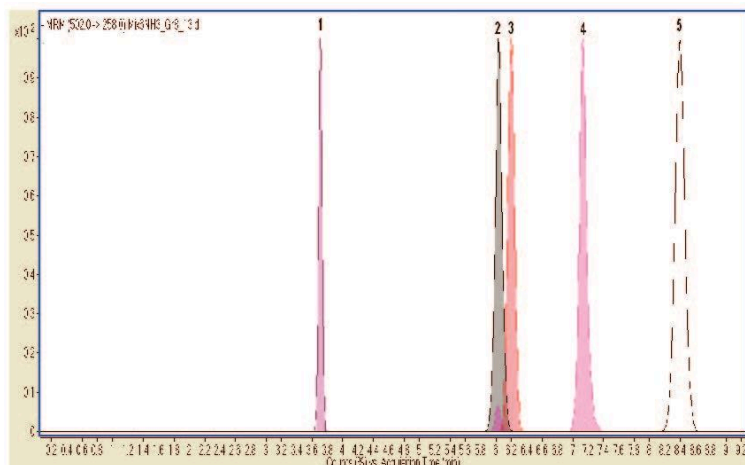


Phosphorylated Sugars Analyzed with LCMS - AppNote

Nucleotide Sugars UDP, ADP, TDP and CDP

UDP Hexanolamine was used as the Internal Standard in the analysis of Nucleotide Sugars in this rapid analysis Method. The Mobile Phase was designed to maximize the detector response in LCMS for maximum Chromatographic Efficiency. The simple “*Inverse Gradient*” which produces an Aqueous Normal Phase (ANP) HPLC Method, was required for the results shown.

This Method can be used in measuring Metabolite Concentration.



Peaks:

1. ADP–Glucose, *RT* = 3.68 min, monitored MRM transitions were *m/z* 588 to *m/z* 346
2. Proprietary Sugar Nucleotide, *RT* = 6.03 min, monitored MRM transitions were *m/z* 563 to *m/z* 321
3. Proprietary Sugar Nucleotide, *RT* = 6.20 min, monitored MRM transitions were *m/z* 606 to *m/z* 385
4. CDP–Glucose, *RT* = 7.13 min, monitored MRM transitions were *m/z* 564 to *m/z* 322
5. UDP Hexanolamine (internal standard), *RT* = 8.40 min, monitored MRM transitions were *m/z* 502 to *m/z* 258

MRM = Multiple Reaction Monitoring in LCMS/MS

Method Conditions

Column: Cogent Diamond Hydride™, 4μm, 100Å

Catalog No.: [70000-15P-2](#)

Dimensions: 2.1 x 150mm

Mobile Phase:

A: DI Water / 0.1% Ammonium Formate *pH* 7.2

B: 90:10 Acetonitrile / DI Water / 0.1% Ammonium Formate *pH* 6

Gradient:

Time (minutes)	%B
0	95
10.0	75

12.0	75
12.1	95
15.0	95

Flow rate: 0.3mL / minute

Sample Preparation: 400mL DI Water / 400mL Acetonitrile / 20mL of Stock Solution of each compound / 5mL of 12% ammonia

Detection: ESI – NEG - Agilent 6210 MSD TOF Mass Spectrometer

Note: Please note the addition of small amount of Ammonia to the Sample Matrix. The alkaline environment of the Sample Matrix assured Efficient and Symmetrical Peaks for all analytes.



Attachment

No 70 Phosphorylated Sugars Analyzed with LCMS pdf 0.3 Mb [Download File](#)

Printed from the Chrom Resource Center

Copyright 2025, All Rights Apply

MicroSolv Technology Corporation

9158 Industrial Blvd. NE, Leland, NC 28451

Tel: (732) 380-8900

Fax: (910) 769-9435

Email: customers@mtc-usa.com

Website: www.mtc-usa.com