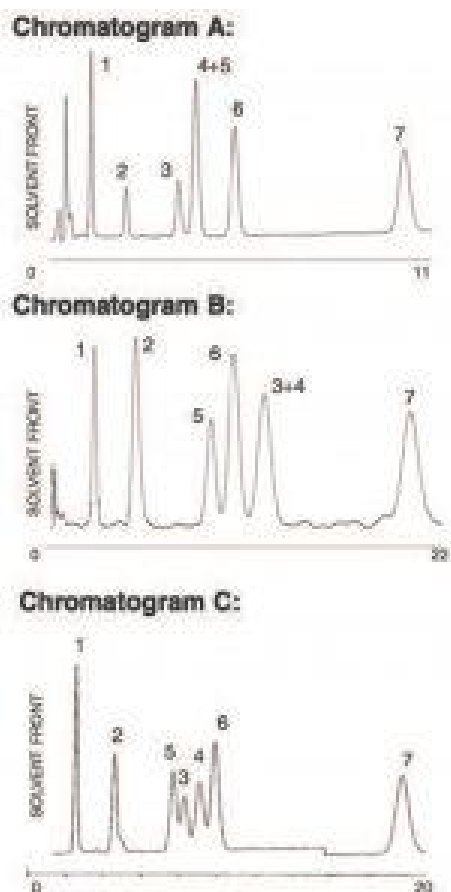


## Selectivity Mechanism with Different Solvents by HPLC - AppNote

### Polarity or Shape Recognition

An FDA requirement for Birth Control Product Analysis is the resolution of hormonal steroids ETES and ESTN. In this Method, Peaks ETES and ESTN are resolved with Polarity-based, Reversed Phase, ACN as the organic. When eluting with the shape Recognition in Methanol, ETES and ESTN are extremely well. However, in this test mix ETES now co-elutes with ESTD.

By mixing the Selectivity mechanisms, Polarity (ACN) and shape Recognition (MeOH), partial resolution was achieved on all compounds using the UDC Cholesterol Column in this Method. Scaling up to a 250 x 4.6mm Column resulted in baseline resolution of all Peaks.



### Peaks:

1. Prednisolone
2. Corticosterone
3. Estradiol
4. Ethinyl Estradiol
5. Estrone

- 6. Norgesterel
- 7. Progesterone

## Method Conditions

**Column:** Cogent UDC-Cholesterol™, 4µm, 100Å

**Catalog No.:** 69069-75P

**Dimensions:** 4.6 x 75mm

**Mobile Phase:**

- A. 60% Aqueous (0.1% Trifluoroacetic Acid TFA) / 40% Acetonitrile (ACN)
- B. 45% Aqueous (0.1% Trifluoroacetic Acid TFA) / 55% MeOH
- C. 56% Aqueous (0.1% Trifluoroacetic Acid TFA) / 24% MeOH and 20% ACN

**Flow rate:** 1mL / minute

**Detection:** UV @ 240nm

---

**Notes:** Using a single UDC Cholesterol Column with orthogonal selectivity, polarity in ACN and shape recognition in Methanol can lead to unique problem solving.

---



**Attachments** No 18 Different Solvent Selectivity Mechanism with HPLC pdf [Download File](#)

Printed from the Chrom Resource Center

Copyright 2025, All Rights Apply

**MicroSolv Technology Corporation**

9158 Industrial Blvd. NE, Leland, NC 28451

Tel: (732) 380-8900

Fax: (910) 769-9435

Email: [customers@mtc-usa.com](mailto:customers@mtc-usa.com)

Website: [www.mtc-usa.com](http://www.mtc-usa.com)