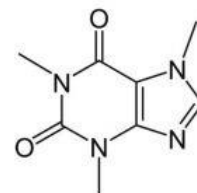
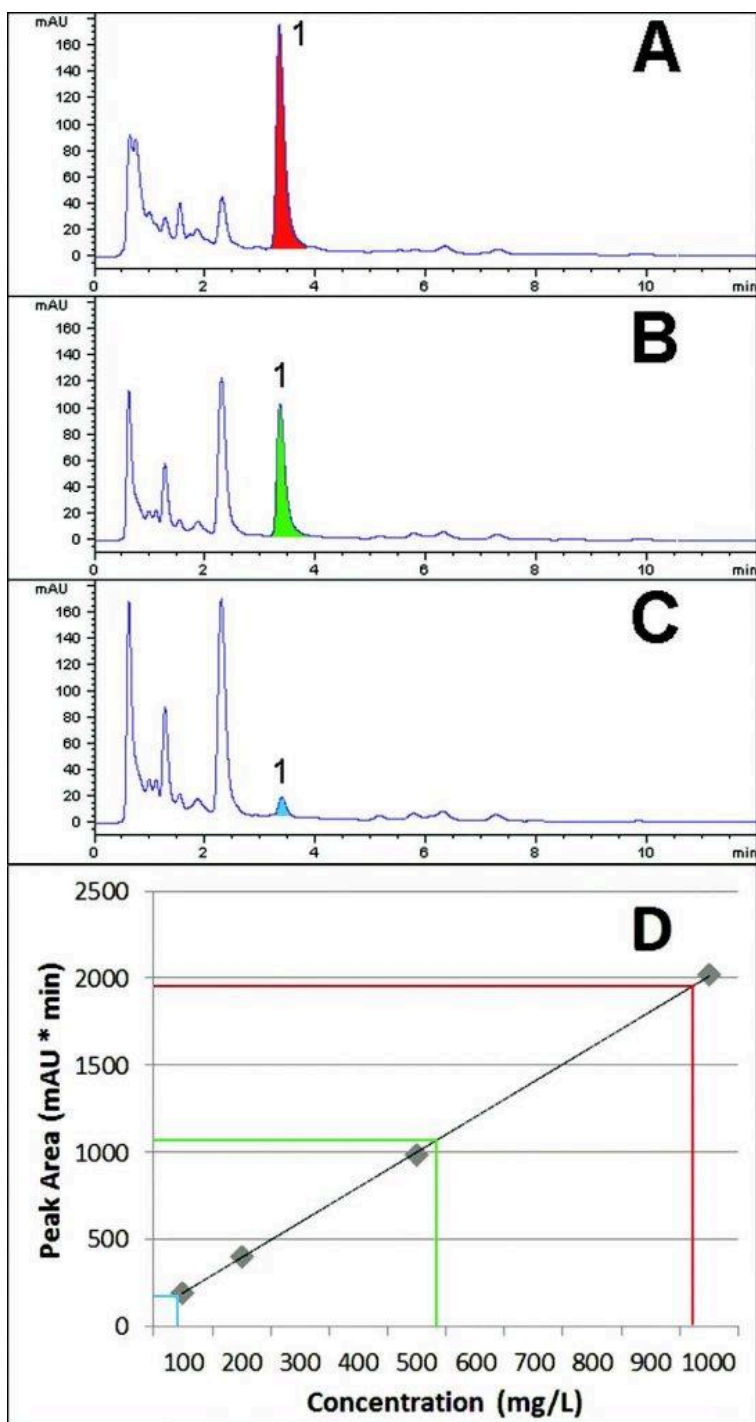


Caffeine Content in Coffee Analyzed with HPLC - AppNote

Espresso, Regular, and De-Caffeinated Coffee Caffeine Content

Caffeine is separated from other matrix components in three common Coffee beverages in this AppNote. A shot of Espresso (*Figure A*) had the highest content, followed by regular drip Coffee (*Figure B*) as expected. In De-Caffeinated Coffee, Caffeine is extracted from the coffee beans but even after numerous extractions, Caffeine is not completely removed. This is illustrated by the chromatogram for the De-Caffeinated Coffee sample (*Figure C*), where a Caffeine peak was detected.

A calibration curve was constructed in the range of 100 – 1000mg / L (*Figure D*), which provided estimates of caffeine content in the Beverages: Espresso: 964mg / L, Regular Coffee: 539mg / L, and Decaf Coffee: 85mg / L.



Caffeine

Peak:
Caffeine

Method Conditions

Column: Cogent Bidentate C18 2.0™, 2.2μm, 120Å

Catalog No.: [40218-05P-2](#)

Dimensions: 2.1 x 50mm

Mobile Phase: 90:10 A: DI Water with 0.1% Formic Acid (v/v), / B: Acetonitrile with 0.1% Formic Acid (v/v)

Injection vol.: 0.5μL

Flow rate: 0.3mL / minute

Detection: UV @ 254nm

Sample Preparation: Espresso, Regular, and Decaf Coffee were purchased from a local coffeehouse. The samples were filtered with 0.45μm Nylon Syringe Filters (*MICROSOLV Tech Corp.*). A 1000ppm Caffeine reference standard solution was prepared in a diluent of 50:50 Solvent A /

Solvent B. Dilutions were made from this Stock Solution to obtain concentrations of 100, 200, and 500ppm.

t₀: 0.8 minutes

Note: Caffeine is a xanthine alkaloid found in the coffee plant, the tea bush, the kola nut, and other plants. It is the most commonly consumed psychoactive drug in the world.



Attachment

No 318 Caffeine Content in Coffee Analyzed with HPL pdf 0.5 Mb [Download File](#)

Printed from the Chrom Resource Center

Copyright 2025, All Rights Apply

MicroSolv Technology Corporation

9158 Industrial Blvd. NE, Leland, NC 28451

Tel: (732) 380-8900

Fax: (910) 769-9435

Email: customers@mtc-usa.com

Website: www.mtc-usa.com