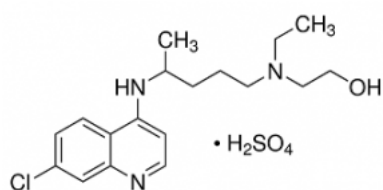
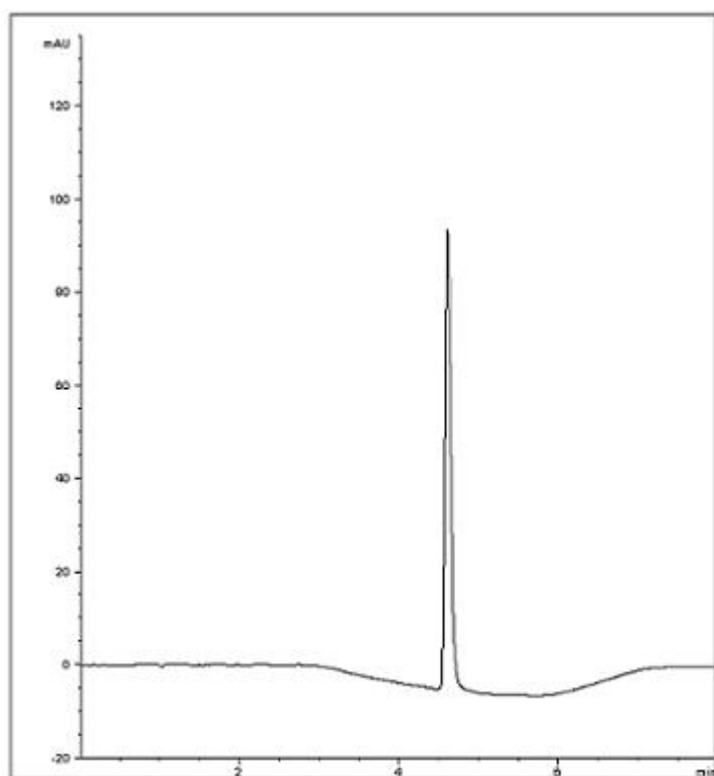


## Hydroxychloroquine Sulfate - AppNote

Hydroxychloroquine Sulfate presents a few Complexities to Routine Chromatographic Analysis.

The Amine Groups also interact with lone-Silanols, causing Peak Tailing on regular Silica Columns. In typical Reversed Phased Modes, Buffers are needed in higher concentrations to aid in retention, as well as Ion Pair Reagents. These additives can hinder coupling in Mass Spectrometry and also increases the likelihood of source Contamination. However, the use of a Cogent Diamond Hydride™ Column in Aqueous Normal Phase (ANP) illustrates how Hydroxychloroquine can be readily retained, with good run-to-run precision, and Excellent Peak Shape without Ion Pairing Reagents. (%RSD = 0.09, SD below 0.004.)

*This method demonstrates an easy HPLC method that can be quite readily transferred to LCMS.*



Hydroxychloroquine sulfate

**Peak:**

Hydroxychloroquine Sulfate

## Method Conditions:

**Column:** Cogent Diamond Hydride™, 4µm, 100Å

**Catalog No.:** 70000-75P

**Dimensions:** 4.6 x 75 mm

### Mobile Phase:

A. DI Water / 0.1% Formic Acid (v/v)

B. Acetonitrile / 0.1% Formic Acid (v/v)

### Gradient:

Time (minutes)	%B
0	80
1	80
3	50
4	50
5	80
8	80

**Injection Volume:** 1ul

**Flow Rate:** 1.0 / minute

**Detection:** 254nm

**Sample Preparation:** 0.1 mg/mL Hydroxychloroquine Sulfate in 50:50 Acetonitrile: DI H2O

**Note:** *Hydroxychloroquine is an inexpensive antimalarial drug, now regarded as a safe and reasonably effective treatment for various autoimmune rheumatic diseases including systemic lupus erythematosus.*



## Attachment

**Hydroxychloroquine Sulfate AppNote.pdf** 0.1 Mb [Download File](#)

Printed from the Chrom Resource Center

Copyright 2025, All Rights Apply

**MicroSolv Technology Corporation**

9158 Industrial Blvd. NE, Leland, NC 28451

Tel: (732) 380-8900

Fax: (910) 769-9435

Email: [customers@mtc-usa.com](mailto:customers@mtc-usa.com)

Website: [www.mtc-usa.com](http://www.mtc-usa.com)