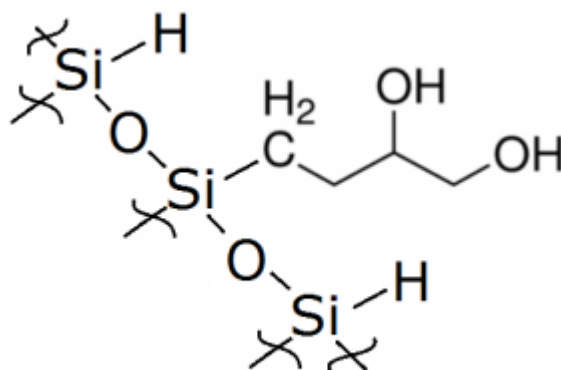


## What is the chemical structure of the ligand in the Cogent DIOL HPLC stationary phase - FAQ

**The Cogent Diol™ stationary phase structure has a single point direct silicon to carbon attachment to the silica as shown below.**



**Note** this bonded phase is attached to the silica hydride surface and offers very unique retention mechanisms for both RP and ANP HPLC.

