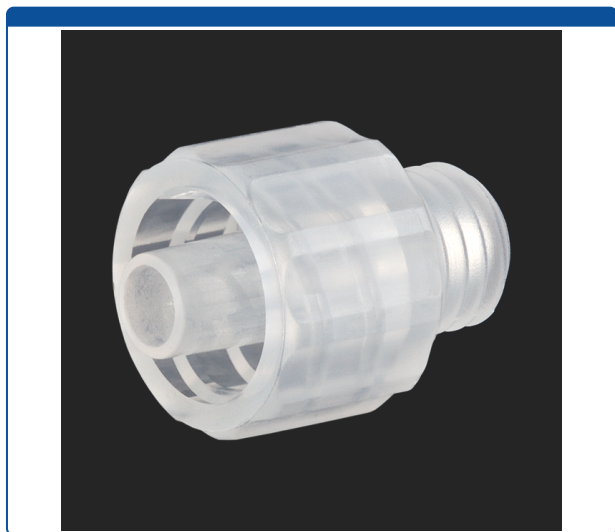


## Catalog Number

47452-31

**Adapter**, for use with low pressure. Male luer to 1/4-28 male connection. Polypropylene. ARE-Applied Research brand. Bulk Price.



### Additional Info

This adapter has a male Luer Lock connection on one side and a 1/4-28 threaded male connection on the other side with a through hole of 0.163 inches (4.15 mm).

*This adapter is excellent when using a syringe filter or other device that has a female Luer Lock or Luer Slip port and you want to connect to a port with a 1/4-28 screw threaded female port and 1/8th inch (3.2 mm) OD tubing.*

- Maximum Temperature: 100°C.
- Maximum Pressure: 1,000 psig.
- Click [HERE](#) for economical pack of 10.

*NOTE: A 1/8th inch ID ETFE ferrule is required to work with the Male 1/4-28 threaded connection which is sold separately. Click [HERE](#) for ordering information.*

### MicroSolv Technology Corporation

9158 Industrial Blvd. NE, Leland, NC 28451

tel. (732) 380-8900, fax (910) 769-9435

Email: [customers@mtc-usa.com](mailto:customers@mtc-usa.com)

Website: [www.mtc-usa.com](http://www.mtc-usa.com)

Printed On 2024/05/15