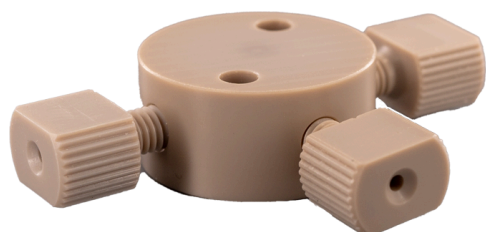


Catalog Number

49302-T11-005

Union, Connector Set, Tee, high pressure, 0.30 mm / 0.012 inch through hole with 10-32 screw threads. PEEK, round with an internal "T". Use with 1/16 inch tubing. ARE-Applied Research brand. 5/PK.



Pack of 5

Additional Info

This "Union" set is used to connect PEEK or stainless steel tubing on all ends, in the high pressures zones of HPLC systems. A "Tee Connection" is often used to split flow into two directions or to combine two streams into one.

Dead Volume - 0.689 μ L

Supplied with 3 finger tighten connectors (nuts) [47320-10N](#).

Note: Click [HERE](#) for key differences between high and low pressure unions and

Price

\$537.63

Additional Info

adapters.

MicroSolv

9158 Industrial Blvd. NE, Leland, NC 28451

tel. (732) 380-8900, fax (910) 769-9435

Email: customers@mtc-usa.com

Website: www.mtc-usa.com

Price

\$537.63