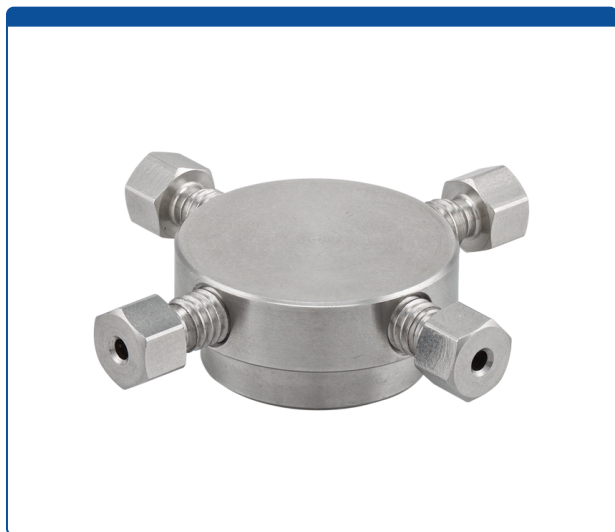


Catalog Number

49402-CX-51

Union, Connector Kit, Cross, high pressure, 0.50 mm / 0.020 inch through hole with 10-32 screw threads. stainless steel, round with an internal "X" flow pattern. Use with 1/16 inch tubing. ARE-Applied



Additional Info

This Union is used to connect PEEK or stainless-steel tubing with the same connectors on all ends in the high pressures zones of HPLC systems. A "Cross X" internal flow pattern is often used to split flow into two or three directions or to combine two or three streams into one.

MicroSolv Technology Corporation

9158 Industrial Blvd. NE, Leland, NC 28451

tel. (732) 380-8900, fax (910) 769-9435

Email: customers@mtc-usa.com

Website: www.mtc-usa.com

Printed On 2024/05/06