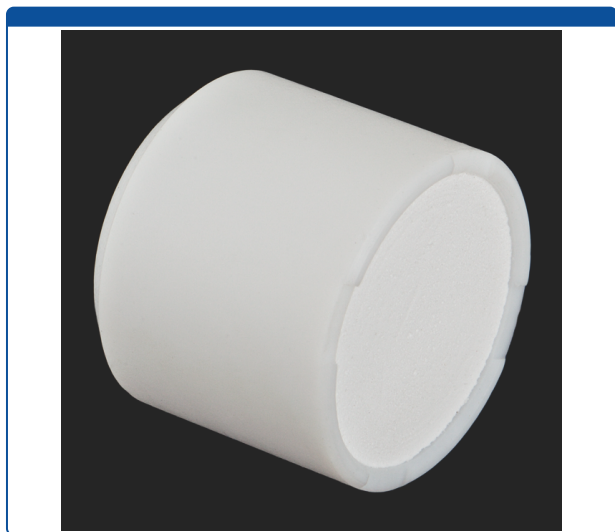


## Catalog Number

58846-E-08-005

**Mobile Phase Filter, 10  $\mu$ m, Last Drop, PTFE, 22 mm diameter.**  
Economy. ARE-Applied Research brand. 5/PK.



### Additional Info

These "biocompatible" Last Drop, all PTFE mobile phase filters are manufactured with a 10  $\mu$ m PTFE filter element and will provide the highest filter capacity and throughput while using a maximum amount of solvent. The unique design allows for this flat filter to "vacuum" up to the "last drop of liquid" in the reservoir bottle.

The 10  $\mu$ m pore size element will filter undissolved particles from your solvents that are 10  $\mu$ m or larger preventing them from damaging your HPLC pumps, columns or instrument.

The advantage of a white filter element is that they make it easy to quickly see particles that have been trapped by the filter and if the element needs to be replaced to maintain proper flow of your solvents. These filter elements are soft and easy to remove and replace.

*Install these filters directly in your mobile phase bottles. These filters are designed for use with 1/8-inch tubing.*

### MicroSolv Technology Corporation

9158 Industrial Blvd. NE, Leland, NC 28451

tel. (732) 380-8900, fax (910) 769-9435

Email: [customers@mtc-usa.com](mailto:customers@mtc-usa.com)

Website: [www.mtc-usa.com](http://www.mtc-usa.com)

### Price

**\$133.48**

Printed On 2024/05/11